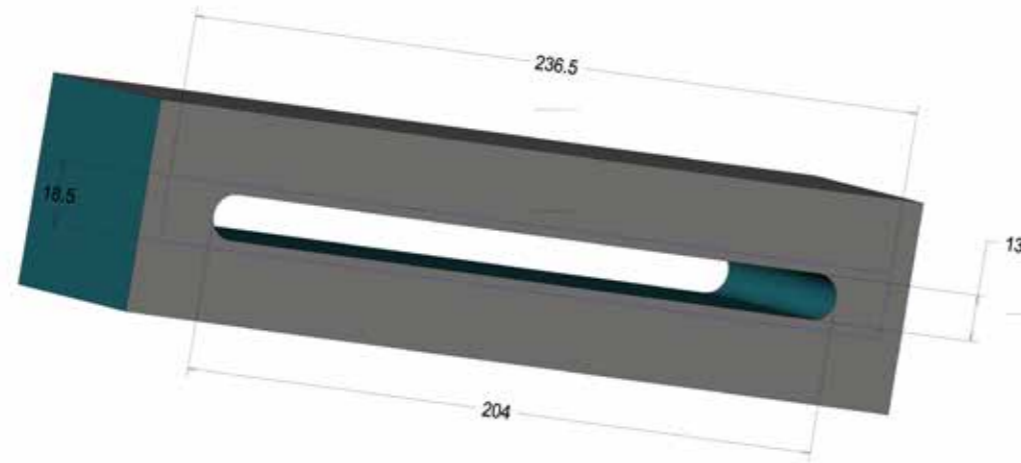


LINKVENT Mk II

**2500**

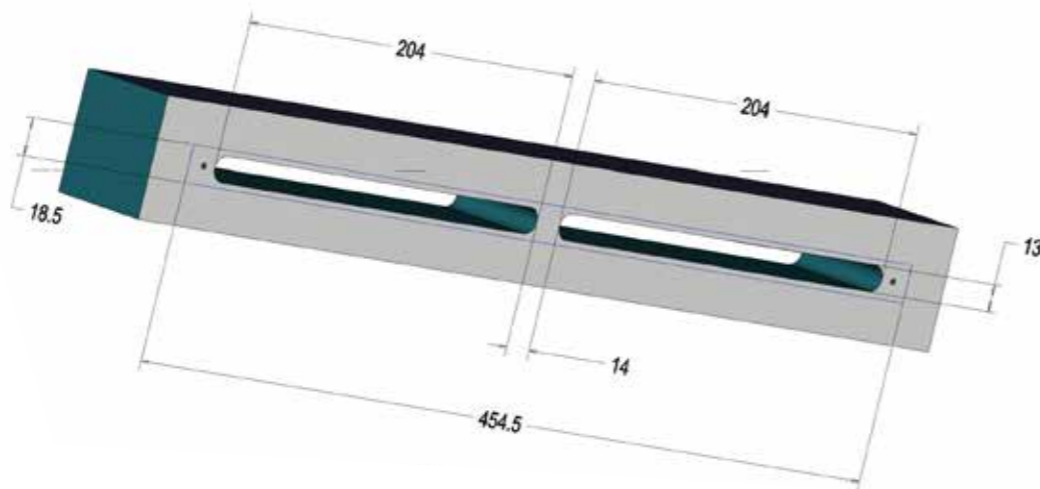
Routing Detail



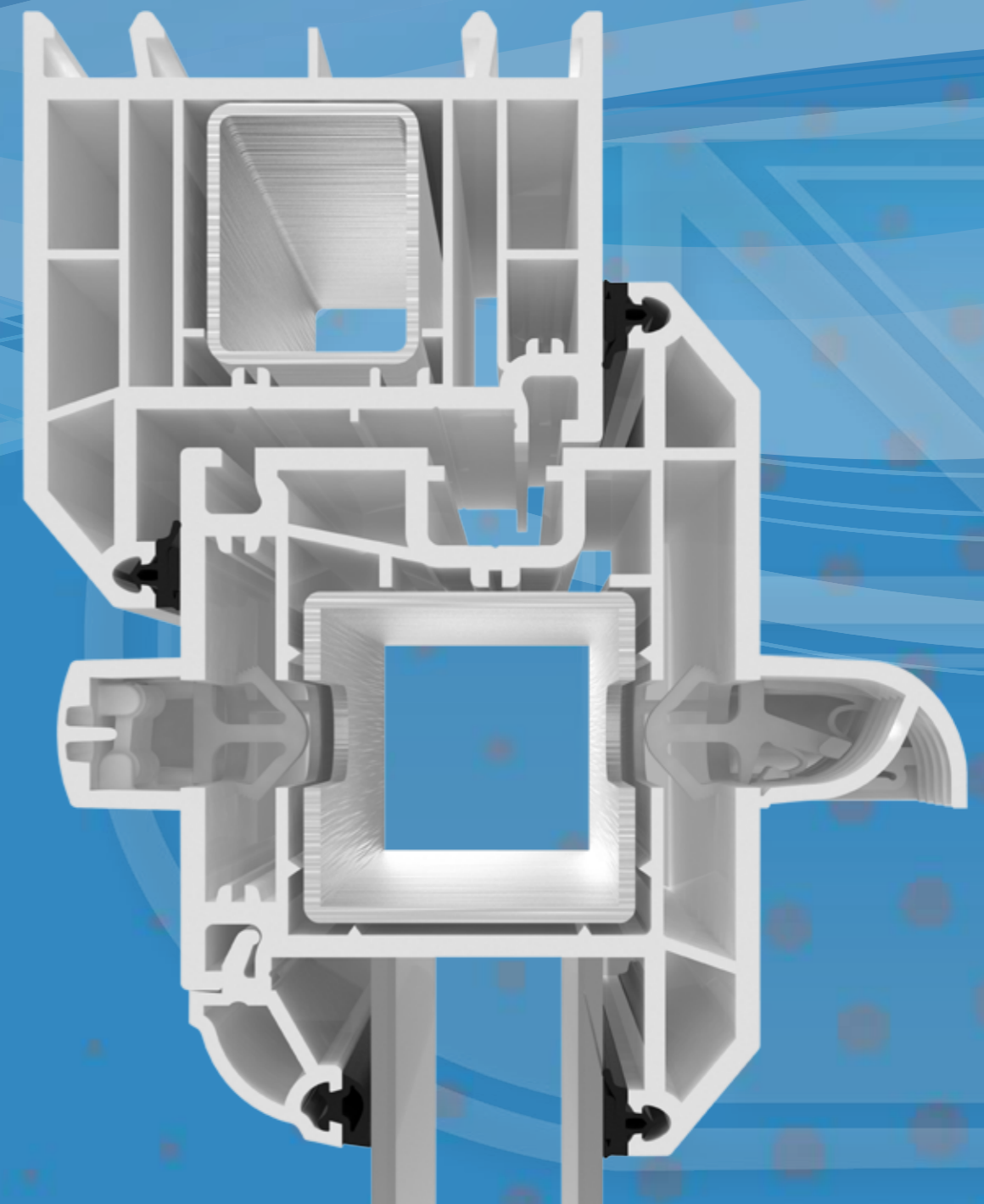
LINKVENT Mk II

**5000**

Routing Detail



# INTRODUCING THE NEW LINKVENT Mk II



For more information on any of our products please contact us:

T 01295 264 533 | F 01295 266 699 | E [sales@glazpart.co.uk](mailto:sales@glazpart.co.uk) | [www.glazpart.com](http://www.glazpart.com)



# Compact... Quiet... Quick... Discrete...

The next generation of Glazparts trickle vent range continues to evolve with the development of the Link Vent Mk2.

With its more compact, sleek design the Link vent Mk2 canopy extends a mere 25mm. The design benefits from its aerodynamic features which direct the air flow efficiently through the vents pathway, developed to meet the minimum requirements of the building regulations Part F1:2010.

Improved Db noise reduction to new levels of performance whilst retaining the aesthetically pleasing and patented ventilator design which assists in reducing the visibility of a trickle vent on your windows.

Innovative design is also mixed with availability in almost 30 solid colour or wood grain finishes. Then add the options for canopy vacuum foiling to match your linear wrapped profiles, spraying to ANY RAL

number; the Link Vent Mk2 now comes in 1,000's of colour options. You can even mix and match when your customers select window designs with colour foiled profile externally and white internally.

But how could we improve the product even more if you're an installer or fabricator? There are still NO end caps to loose or break... fixing is within the products design. The Link vent Mk2 is supplied with fixing clips fitted! So, you can just push fit the vent into place when installing...in seconds. The clips automatically centre the vent in the rout aiding location ensuring it is fitted level on the window.

IF you still prefer to screw fix your trickle vents, just pop out the fitted screw caps before fitting and fix as normal.

## LINKVENT Mk II 2500

### 2500 VENT

Equivalent Area 2500mm<sup>2</sup> EQA    Free Area 2512mm<sup>2</sup>    Acoustic D n,e,w (+/-) - vent open 38(0;1)    Acoustic D n,e,w (+/-) - vent closed 51(-1;2)

Internal				External								Ventilator			
Ventilator				Canopy				Grille (Timber, Sliding door, Sash)				Ventilator			
H (mm)	L (mm)	D (mm)	Weight (gram)	H (mm)	L (mm)	D (mm)	Weight (gram)	H (mm)	L (mm)	D (mm)	Weight (gram)	Attachment type	Rout H (mm)	Rout L (mm)	Stand W (mm)
18.5	236.5	15	30	18.5	236.5	25	30	26	236.5	2.5	11	Clip or Screw	13	204	na

**EQUIVALENT AREA** – 2500 vent (2500EQA)

**AIR LEAKAGE** – 2500 vent 0.39 m<sup>3</sup>/h 0.11 L/s

**WATERTIGHTNESS TEST TO BS EN 13141-1** – 2500 vent – Resistant to water penetration using method 1A meeting Class 9A requirement up to and at 600pa in BS EN 12208

**DB RATING** – Airborne sound insulation to BS EN ISO 10140-1:2016 Annex E and BS EN ISO 10140-2:2010 and single number calculated in accordance with BS EN ISO 717-1:2013

## LINKVENT Mk II 5000

### 5000 VENT

Equivalent Area 5000mm<sup>2</sup> EQA    Free Area 5049mm<sup>2</sup>    Acoustic D n,e,w (+/-) - vent open 35(0;1)    Acoustic D n,e,w (+/-) - vent closed 43(0;0)

Internal				External								Ventilator			
Ventilator				Canopy				Grille (Timber, Sliding door, Sash)				Ventilator			
H (mm)	L (mm)	D (mm)	Weight (gram)	H (mm)	L (mm)	D (mm)	Weight (gram)	H (mm)	L (mm)	D (mm)	Weight (gram)	Attachment type	Rout H (mm)	Rout L (mm)	Stand W (mm)
18.5	454.5	15	60	18.5	454.5	25	49	26	436	2.5	20	Clip or Screw	13	422	14

**EQUIVALENT AREA** – 5000 vent (5000EQA)

**AIR LEAKAGE** – 5000 vent 1.29 m<sup>3</sup>/h 0.36 L/s

**WATERTIGHTNESS TEST TO BS EN 13141-1** – 5000 vent – Resistant to water penetration using method 1A meeting Class 9A requirement up to and at 600pa in BS EN 12208

**DB RATING** – Airborne sound insulation to BS EN ISO 10140-1:2016 Annex E and BS EN ISO 10140-2:2010 and single number calculated in accordance with BS EN ISO 717-1:2013

